

### Specifications

Model	Z-80/60																											
Measurements	US	Metric																										
Working height maximum*	84 ft	25.77 m																										
Platform height maximum	78 ft	23.77 m																										
Horizontal reach maximum	60 ft	18.29 m																										
Up and over clearance maximum	29 ft	Below ground reach	15 ft 10 in	4.83 m	<b>A</b> Platform length - 8 ft / 6 ft	3ft/2ft 6in	0.91m/0.76m	<b>B</b> Platform width - 8 ft / 6 ft	8ft/6ft	2.44m/1.83m	<b>C</b> Height - stowed	9 ft 10 in	3.00 m	<b>D</b> Length - stowed	37 ft	11.27 m	<b>E</b> Length - transport	37 ft	11.27 m	<b>F</b> Width	8 ft 2 in	2.49 m	<b>G</b> Wheelbase	9 ft 4 in	2.85 m	<b>H</b> Ground clearance - center	12 in	0.30 m
Below ground reach	15 ft 10 in	4.83 m																										
<b>A</b> Platform length - 8 ft / 6 ft	3ft/2ft 6in	0.91m/0.76m																										
<b>B</b> Platform width - 8 ft / 6 ft	8ft/6ft	2.44m/1.83m																										
<b>C</b> Height - stowed	9 ft 10 in	3.00 m																										
<b>D</b> Length - stowed	37 ft	11.27 m																										
<b>E</b> Length - transport	37 ft	11.27 m																										
<b>F</b> Width	8 ft 2 in	2.49 m																										
<b>G</b> Wheelbase	9 ft 4 in	2.85 m																										
<b>H</b> Ground clearance - center	12 in	0.30 m																										

### Productivity

Lift capacity	500 lbs	227 kg
Platform rotation	160°	
Vertical jib rotation	135°	
Turntable rotation	360° continuous	
Turntable tailswing - riser up	3 ft 10 in	1.17 m
Turntable tailswing - riser down	7 ft 4 in	2.24 m
Drive speed - stowed	3.0 mph	4.83 km/h
Drive speed - raised**	0.68 mph	1.1 km/h
Lift speed to full height	76 sec	
Gradeability - 2WD - stowed***	30%	
Gradeability - 4WD - stowed***	45%	
Turning radius - 2WS inside	14 ft 6 in	4.42 m
Turning radius - 2WS outside	24 ft 6 in	7.47 m
Turning radius - 4WS inside	7 ft	2.13 m
Turning radius - 4WS outside	15 ft	4.57 m
Controls	12 V DC proportional	
Tires	18-625 NHS	

### Power

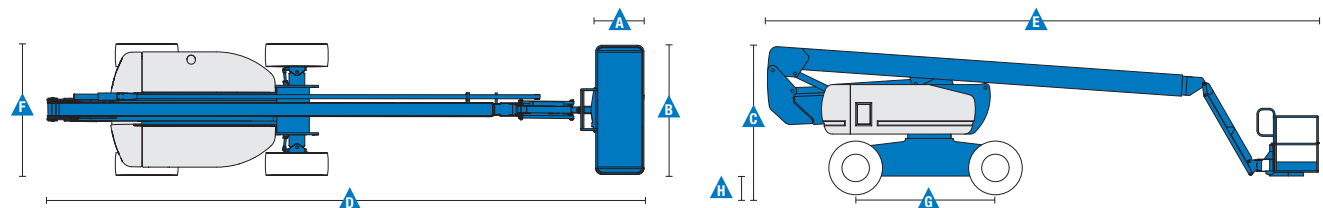
Power source	Deutz TD 2011 L04i 4 cylinder diesel 74 hp (55 kW) Perkins 804D-33 4 cylinder diesel 63 hp (47 kW) Continental TME27 4 cylinder gas/LPG 74 hp (55 kW)	
Auxiliary power unit	12 V DC	
Hydraulic tank capacity	45 gal	170 L
Fuel tank capacity – diesel machines	35 gal	132 L
Fuel tank capacity – gas/LPG machines	30 gal	114 L

### Weight\*\*\*\*

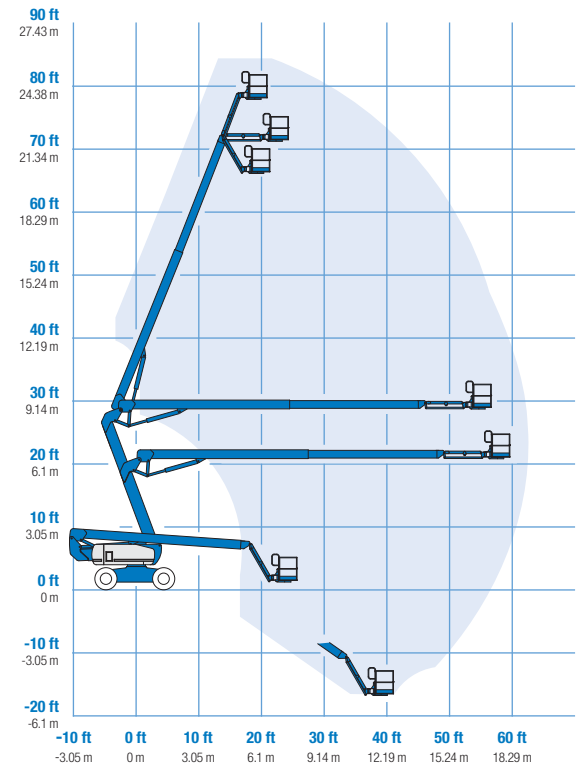
2WS	35,900 lbs	16,284 kg
4WS	37,500 lbs	17,010 kg

### Standards Compliance

«ANSI A92.5, CSA B354.4, EN 280, AS 1418.10



### Range Of Motion Z-80/60



\* The metric equivalent of working height adds 2 m to platform height. U.S. adds 6 ft to platform height.

\*\* In lift mode (platform raised), the machine is designed to operate on firm, level surfaces only.

\*\*\* Gradeability applies to driving on slopes. See operator's manual for details regarding slope ratings.

\*\*\*\* Weight will vary depending on options and/or country standards.