

### Specifications

MODEL	Z-62/40	
Measurements	US	Metric
Working height maximum*	67 ft 11 in	20.87 m
Platform height maximum	61 ft 11 in	18.87 m
Horizontal reach maximum	40 ft 5 in	12.42 m
Up and over clearance maximum	25 ft 7 in	7.8 m
<b>A</b> Platform length - 8 ft / 6 ft model	3 ft / 2 ft 6 in	0.91 m / 0.76 m
<b>B</b> Platform width - 8 ft / 6 ft model	8 ft / 6 ft	2.44 m / 1.83 m
<b>C</b> Height - stowed	8 ft 4 in	2.54 m
Height - transport (jib tucked under)	9 ft 6 in	2.90 m
<b>D</b> Length - stowed	30 ft 3 in	9.25 m
Length - transport (jib tucked under)	24 ft 10.5 in	7.58 m
<b>E</b> Width	8 ft 2 in	2.49 m
<b>F</b> Wheelbase	8 ft 2 in	2.49 m
<b>G</b> Ground clearance - center	1 ft 4 in	41 cm

### Productivity

Lift capacity	500 lbs	227 kg
Platform rotation	180°	
Vertical jib rotation	135°	
Turntable rotation	360° continuous	
Turntable tailswing	zero	
Drive speed - stowed	3.0 mph	4.8 km/h
Drive speed - raised**	1.0 ft/s	0.3 m/s
Gradeability - 2WD - stowed***	30%	30%
Gradeability - 4WD - stowed***	45%	45%
Turning radius - 2WS inside	9 ft 2 in	2.80 m
Turning radius - 2WS outside	18 ft 9 in	5.57 m
Turning radius - 4WS inside	4 ft 5 in	1.35 m
Turning radius - 4WS outside	11 ft 11 in	3.6 m
Controls	12V DC proportional	
Tires	355/55D 625	

### Power

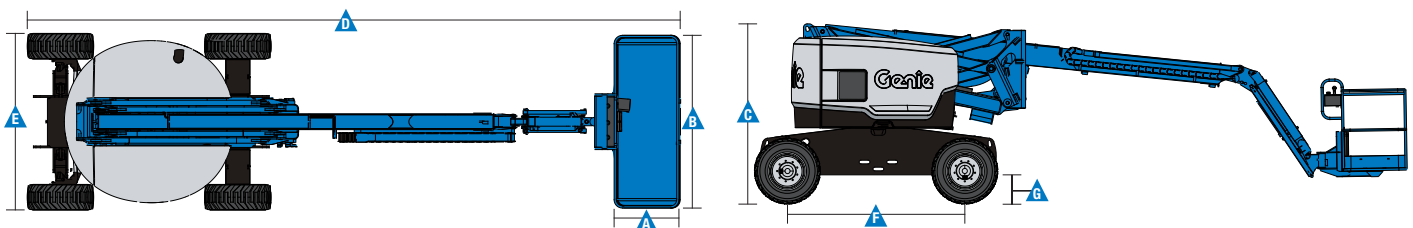
Power source	49 hp (35.79 kW) Deutz diesel T4f D2.9L4*****	
	48 hp (35.79 kW) Perkins diesel T4f 404F-22*****	
	60 hp (56 kW) Ford gas/LPG MSG425	
Auxiliary power unit	12V DC	
Hydraulic tank capacity	35 gal	132.5 L
Fuel tank capacity - diesel	36 gal	136.3 L
- gas	20 gal	75.7 L

### Weight\*\*\*\*

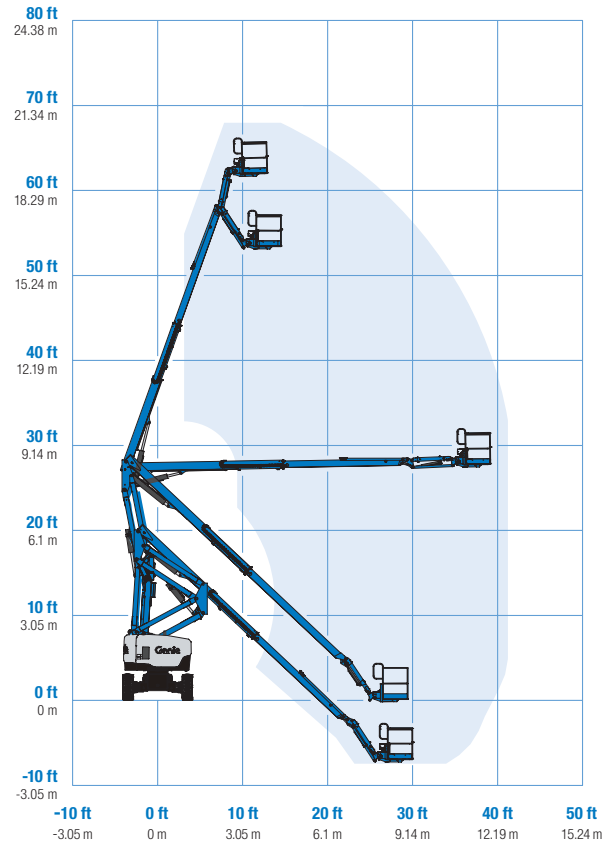
2WS	22,155 lbs	10,070 kg
4WS	23,055 lbs	10,480 kg

### Standards Compliance

ANSI A92.5, CSA B354.4, EN 280, AS 1418.10



### Range Of Motion Z-62/40



\* The metric equivalent of working height adds 2 m to platform height. U.S. adds 6 ft to platform height.

\*\* In lift mode (platform raised), the machine is designed to operate on firm, level surfaces only.

\*\*\* Gradeability applies to driving on slopes. See operators manual for details regarding slope ratings.

\*\*\*\* Weight will vary depending on options and/or country standards.

\*\*\*\*\* Tier 4f engines available in US only.