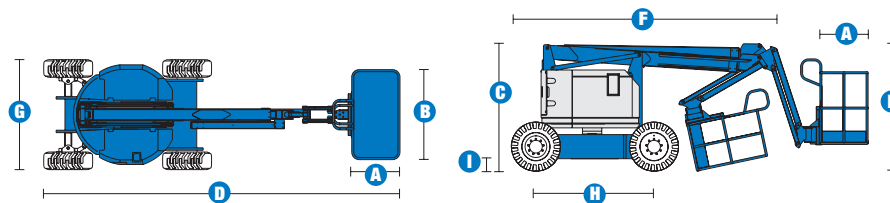
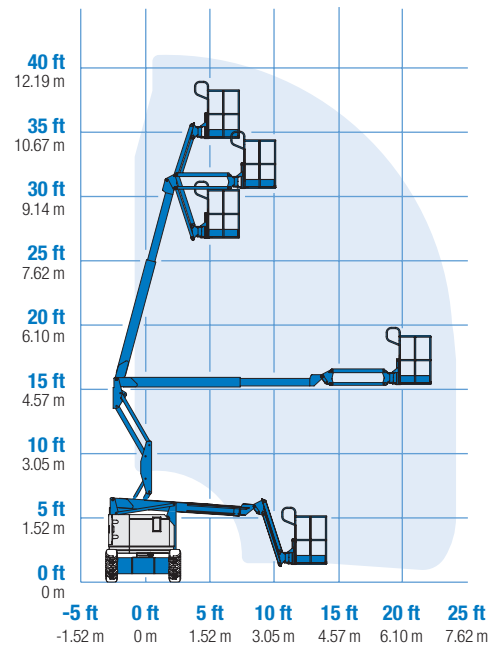


Specifications



RANGE OF MOTION Z™-34/22 IC



MODELS	Z™-34/22 IC 2WD		Z™-34/22 IC 4WD	
	Metric	US	Metric	US
Working height maximum*	12.52 m	40 ft 6 in	12.62 m	40 ft 10 in
Platform height maximum	10.52 m	34 ft 6 in	10.62 m	34 ft 10 in
Horizontal reach maximum	6.78 m	22 ft 3 in	6.78 m	22 ft 3 in
Up and over clearance maximum	4.57 m	15 ft	4.60 m	15 ft 1 in
A Platform length	76 cm	2 ft 6 in	76 cm	2 ft 6 in
B Platform width	1.42 m	4 ft 8 in	1.42 m	4 ft 8 in
C Height - stowed	2 m	6 ft 7 in	2.06 m	6 ft 9 in
D Length - stowed	5.64 m	18 ft 6 in	5.66 m	18 ft 7 in
E Storage height	2.26 m	7 ft 6 in	2.26 m	7 ft 6 in
F Storage length	4.11 m	13 ft 6 in	4.11 m	13 ft 6 in
G Width	1.73 m	5 ft 8 in	1.85 m	6 ft 1 in
H Wheelbase	1.88 m	6 ft 2 in	1.88 m	6 ft 2 in
I Ground clearance - centre	15 cm	6 in	17 cm	6.5 in

PRODUCTIVITY				
Lift capacity	227 kg	500 lbs	227 kg	500 lbs
Platform rotation	180°	180°	180°	180°
Vertical jib rotation	139°	139°	139°	139°
Turntable rotation	355° non-continuous		355° non-continuous	
Turntable tailswing	zero	zero	zero	zero
Drive speed - stowed	4.8 km/h	3.0 mph	4.8 km/h	3.0 mph
Drive speed - raised **	1.1 km/h	0.68 mph	1.1 km/h	0.68 mph
Gradeability***	37%	37%	45%	45%
Turning radius - inside	1.75 m	5 ft 9 in	1.80 m	5 ft 11 in
Turning radius - outside	4 m	13 ft 1 in	4.11 m	13 ft 6 in
Controls	12 V DC proportional		12 V DC proportional	
Tyres - air filled	23 x 37 cm	9 x 14.5 in	25,4 x 42 cm	10 x 16.5 in RT

POWER				
Power source	Kubota DF-972 3-cylinder petrol/LPG 31 hp (23.1 kW) Kubota D-1105 3-cylinder diesel 26 hp (19.4 kW) Perkins 403 D11 3-cylinder diesel 26.4 hp (19.7 kW)			
Auxiliary power unit	12 V DC	12 V DC	12 V DC	12 V DC
Hydraulic tank capacity	71.9 L	19 gal	71.9 L	19 gal
Fuel tank capacity	34.1 L	9 gal	34.1 L	9 gal

WEIGHT****				
CE (air tyres)	4,604 kg	10,150 lbs	4,740 kg	10,450 lbs
CE (foam filled tyres)	4,793 kg	10,566 lbs	5,027 kg	11,082 lbs

STANDARDS COMPLIANCE	CE EN280, PB-10-611-03
----------------------	------------------------

*The metric equivalent of working height adds 2 m to platform height. U.S. adds 6 ft to platform height.

** In lift mode (platform raised), the machine is designed to operate on firm, level surfaces only.

*** Gradeability applies to driving on slopes. See operator's manual for details regarding slope ratings.

**** Weight will vary depending on options and/or country standards.