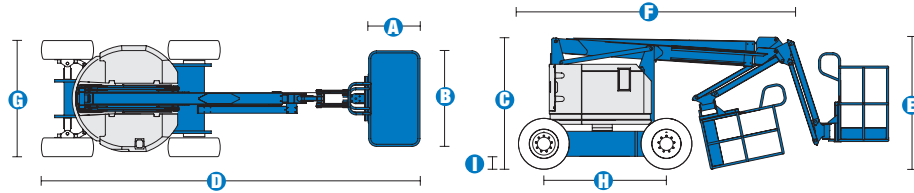
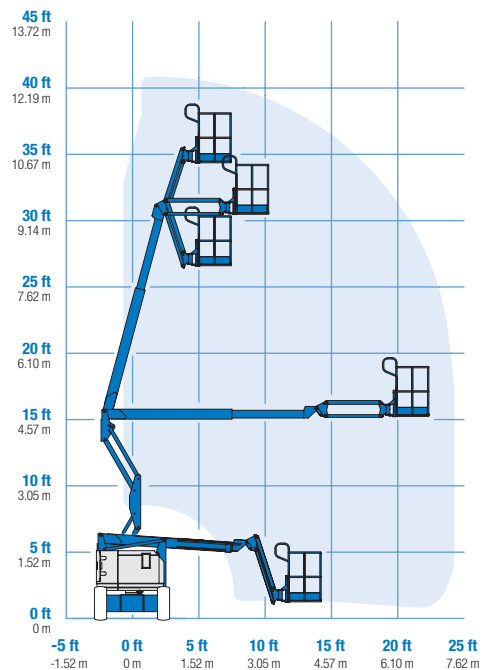


# Specifications



## RANGE OF MOTION Z™-34/22 DC/Bi



MODELS	Z™-34/22 DC		Z™-34/22 Bi-Energy	
	Metric	US	Metric	US
Working height maximum*	12.52 m	40 ft 6 in	12.52 m	40 ft 6 in
Platform height maximum	10.52 m	34 ft 6 in	10.52 m	34 ft 6 in
Horizontal reach maximum	6.78 m	22 ft 3 in	6.78 m	22 ft 3 in
Up and over clearance maximum	4.57 m	15 ft	4.57 m	15 ft
<b>A</b> Platform length	76 cm	2 ft 6 in	76 cm	2 ft 6 in
<b>B</b> Platform width	1.42 m	4 ft 8 in	1.42 m	4 ft 8 in
<b>C</b> Height - stowed	2 m	6 ft 7 in	2 m	6 ft 7 in
<b>D</b> Length - stowed	5.64 m	18 ft 6 in	5.64 m	18 ft 6 in
<b>E</b> Storage height	2.26 m	7 ft 5 in	2.26 m	7 ft 5 in
<b>F</b> Storage length	4.08 m	13 ft 5 in	4.08 m	13 ft 5 in
<b>G</b> Width	1.73 m	5 ft 8 in	1.73 m	5 ft 8 in
<b>H</b> Wheelbase	1.88 m	6 ft 2 in	1.88 m	6 ft 2 in
<b>I</b> Ground clearance - centre	15 cm	6 in	15 cm	6 in

## PRODUCTIVITY

Lift capacity	227 kg	500 lbs	227 kg	500 lbs
Platform rotation	180°	180°	180°	180°
Vertical jib rotation	139°	139°	139°	139°
Turntable rotation	355° non-continuous		355° non-continuous	
Turntable tailswing	zero	zero	zero	zero
Drive speed - stowed	6.4 km/h	4.0 mph	6.4 km/h	4.0 mph
Drive speed - raised**	1.1 km/h	0.68 mph	1.1 km/h	0.68 mph
Gradeability - stowed***	30%	30%	30%	30%
Turning radius - inside	1.75 m	5 ft 9 in	1.75 m	5 ft 9 in
Turning radius - outside	4 m	13 ft 1 in	4 m	13 ft 1 in
Controls	24 V DC proportional		24 V DC proportional	
Tyres	23 x 37 cm	9 x 14.5 in	23 x 37 cm	9 x 14.5 in

## POWER

Power Source	48 V DC (eight 6 V batteries 315 Ah capacity)		48 V DC (eight 6 V batteries 315 Ah capacity) with Kubota 12 Hp (8.9 kw) diesel driven alternator	
Auxiliary Power Unit	24 V DC	24 V DC	24 V DC	24 V DC
Hydraulic Tank Capacity	15.1 L	4 gal	15.1 L	4 gal
Fuel tank capacity	35 L	9 gal	35 L	9 gal

## WEIGHT\*\*\*\*

CE (air tyres)	4,990 kg	11,000 lbs	5,443 kg	12,000 lbs
CE (foam filled tyres)	5,179 kg	11,416 lbs	5,632 kg	12,416 lbs

## STANDARDS COMPLIANCE

CE EN280, PB-10-611-03

\* The metric equivalent of working height adds 2 m to platform height. U.S. adds 6 ft to platform height.

\*\* In lift mode (platform raised), the machine is designed to operate on firm, level surfaces only.

\*\*\* Gradeability applies to driving on slopes. See operator's manual for details regarding slope ratings.

\*\*\*\* Weight will vary depending on options and/or country standards.

## Features

### EASILY CONFIGURED TO MEET YOUR NEEDS

#### PLATFORM OPTIONS

- Steel 1.52 m (5 ft) (standard)
- Steel 1.17 m (3 ft 10 in)

#### JIB

- 1.22 m (4 ft) jib boom

#### POWER

- 48 V DC power source

#### BATTERY CHARGING OPTIONS

- 25 Amp 48 V on-board charger
- On-board alternator powered by Kubota diesel 12 hp (8.9 kW) engine
- Battery charge indicator (BCI)\*

#### TYRE OPTIONS

- Industrial foam-filled (standard)
- Industrial air
- Industrial non-marking (air & foam-filled, DC only)
- Sealant treated air-filled

### STANDARD FEATURES

#### MEASUREMENTS

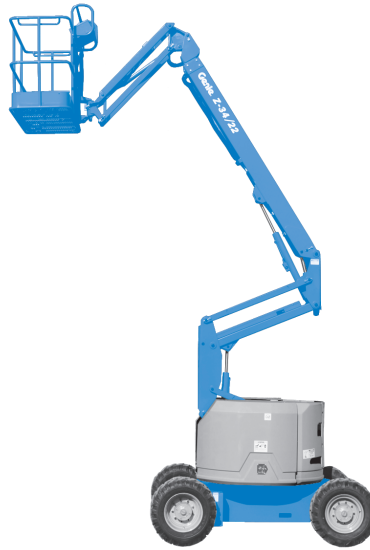
- 12.52 m (40 ft 6 in) working height
- 6.78 m (22 ft 3 in) horizontal reach
- 4.57 m (15 ft) up-and-over clearance
- Up to 227 kg (500 lb) lift capacity

#### PRODUCTIVITY

- 1.22 m (4 ft) jib boom with 139° working range
- Self-levelling platform
- Hydraulic platform rotation
- Fully proportional controls
- Thumb rocker steer
- Drive enable
- AC power to platform
- Horn
- Hour meter
- Tilt alarm
- Descent alarm
- 355° non-continuous turntable rotation
- Locking turntable covers (Bi-Energy only)
- Zero tailswing
- Sep-Ex drive system
- Certified load sensor

#### POWER

- 48 V deep cycle battery pack
- 24 V DC auxiliary power
- On board alternator powered by Kubota 12 hp (8.9 kW) engine (Bi-Energy only)



### OPTIONS & ACCESSORIES

#### PRODUCTIVITY

- Platform swing gate
- Half-mesh platform inserts with swing gate
- Air line to platform
- Fire resistant hydraulic oil
- Biodegradable hydraulic oil
- Aircraft protection package\*\*
- Basic hostile environment kit (Bi-Energy only)
- Tool tray
- Fluorescent tube caddy
- Pipe cradle (pair)
- Flashing beacon
- Travel alarm
- Platform work lights
- Lockable platform control box cover

#### POWER

- Battery charge indicator (BCI)\*
- Low voltage interrupt with BCI
- Cold Weather Package (Bi-Energy only)

#### Distributed By:

#### UK

The Maltings  
Wharf Road  
Grantham NG31 6BH  
UK  
Tel: +44 (0)1476 584333  
Fax: +44 (0)1476 584334

#### France

10, ZA de la Croix St. Mathieu  
28320 Gallardon  
France  
Tel: +33 (0)2 37 26 09 99  
Fax: +33 (0)2 37 26 09 98

#### Germany

Finienweg 3  
28832 Achim/Bremen  
Germany  
Tel: +49 (0)4202 8852-0  
Fax: +49 (0)4202 8852-25

#### Spain

Gaià 31, Pol. Ind. Plá d'en Coll  
08110 Montcada i Reixac  
Barcelona  
Spain  
Tel: +34 93 572 50 90  
Fax: +34 93 572 50 91

#### Scandinavia

Aröds industriväg 34  
422 43 Hisings Backa  
Sweden  
Tel: +46 31 57 51 00  
Fax: +46 31 57 51 04

#### Middle East

Terex Middle East  
PO Box 282325, Dubai  
U.A.E.  
Tel: +971 4 885 8030  
Fax: +971 4 885 6364  
Email: awp.infome@terex.com

#### Genie United States

18340 NE 76th Street  
P.O. Box 97030  
Redmond, WA  
USA 98073-9730  
Tel: +1 425 881-1800  
Fax: +1 425 883-3475

**Email:** AWP-InfoEurope@terex.com

\* Standard on Bi-Energy only

\*\* Reduces platform load capacity to 200 kg (440 lbs)